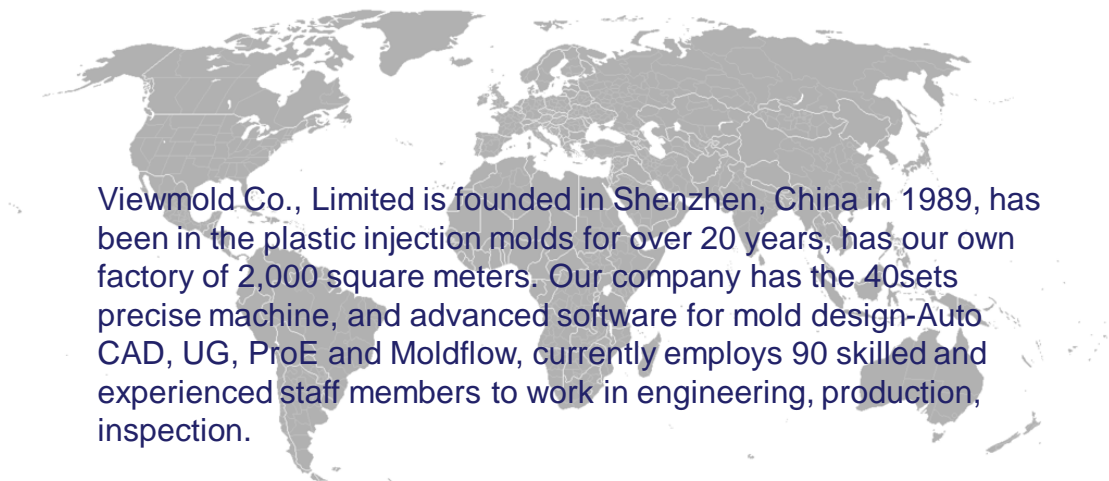


Viewmold's introduction



Viewmold Co., Limited is founded in Shenzhen, China in 1989, has been in the plastic injection molds for over 20 years, has our own factory of 2,000 square meters. Our company has the 40sets precise machine, and advanced software for mold design-Auto CAD, UG, ProE and Moldflow, currently employs 90 skilled and experienced staff members to work in engineering, production, inspection.

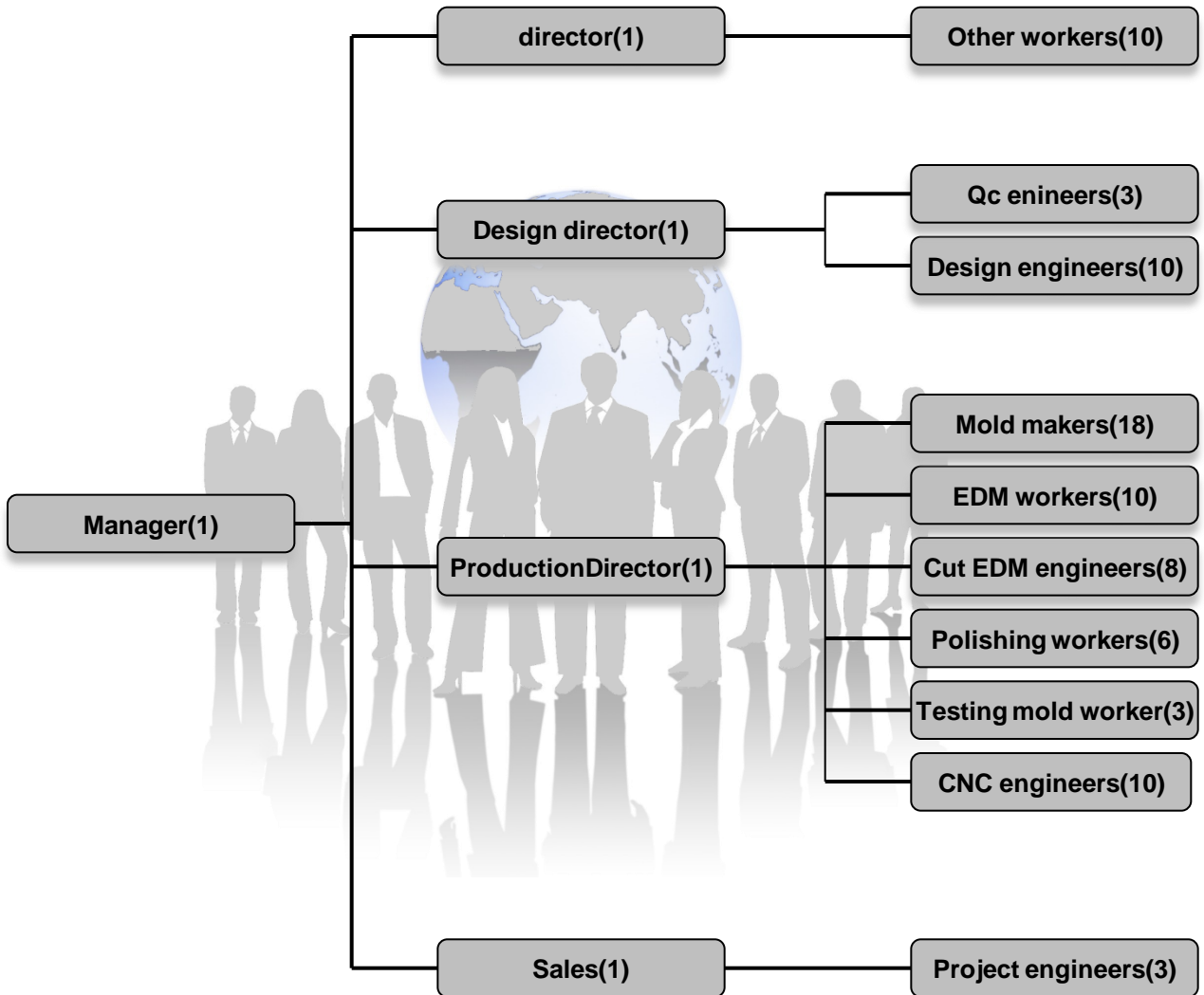
Viewmold design injection mold according to DME or HASCO standard.

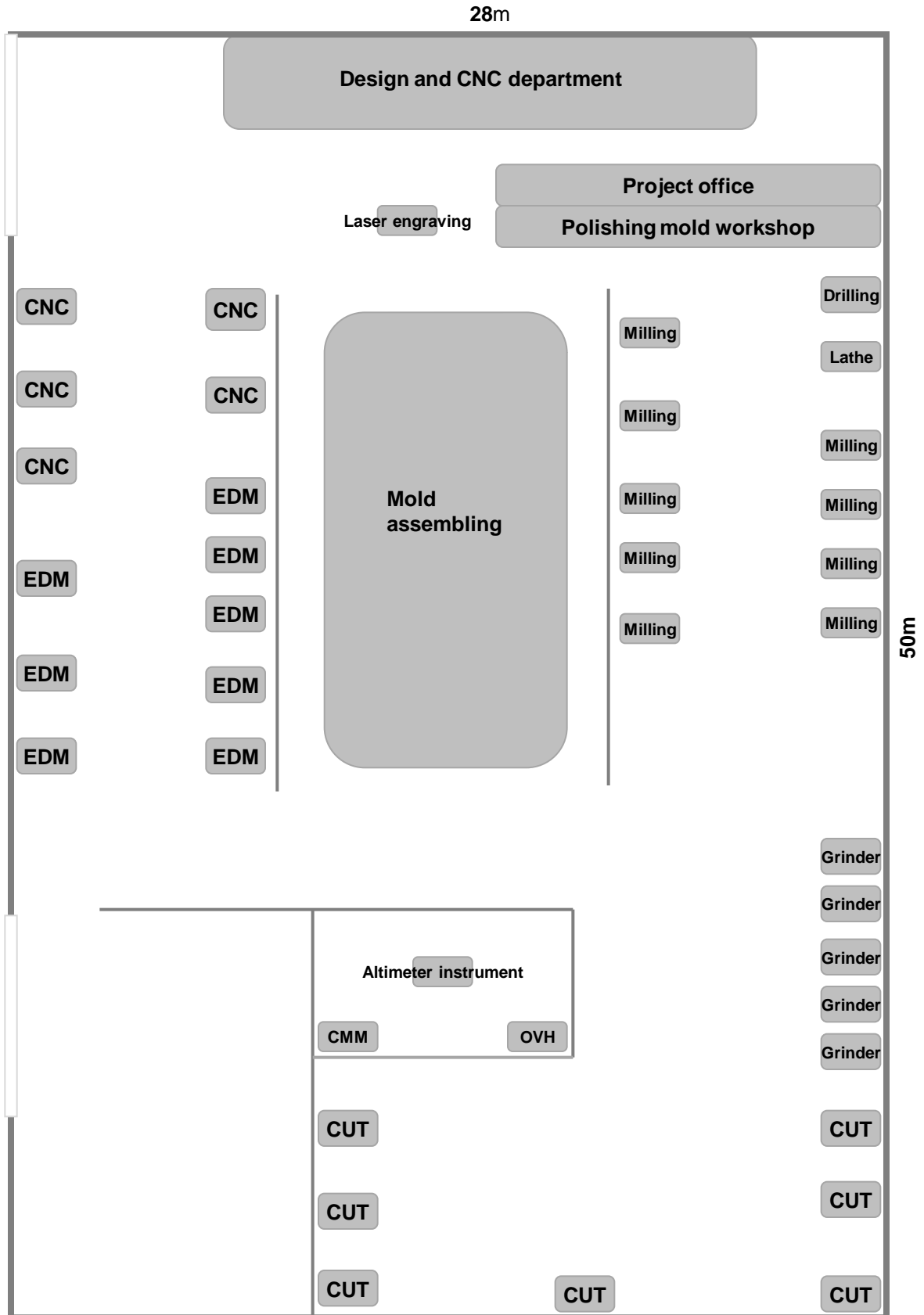
Viewmold can produce about 15 sets injection mold per month, it is from small precision molds with tight tolerance to 10 ton large molds.

Viewmold adopt special excel steel material from famous steel companies, such as:schmolz-bickenbach, Assab, SorelForge.LKM. Our many standard components in the plastic injection molds are purchased through DME, Progressive, PCS, Parker, as custom's request.



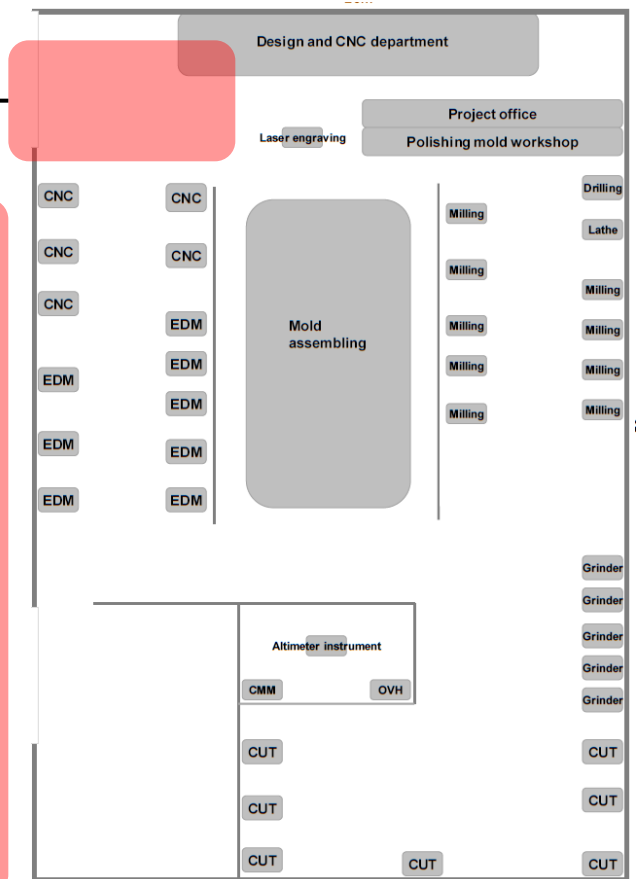
Viewmold's team



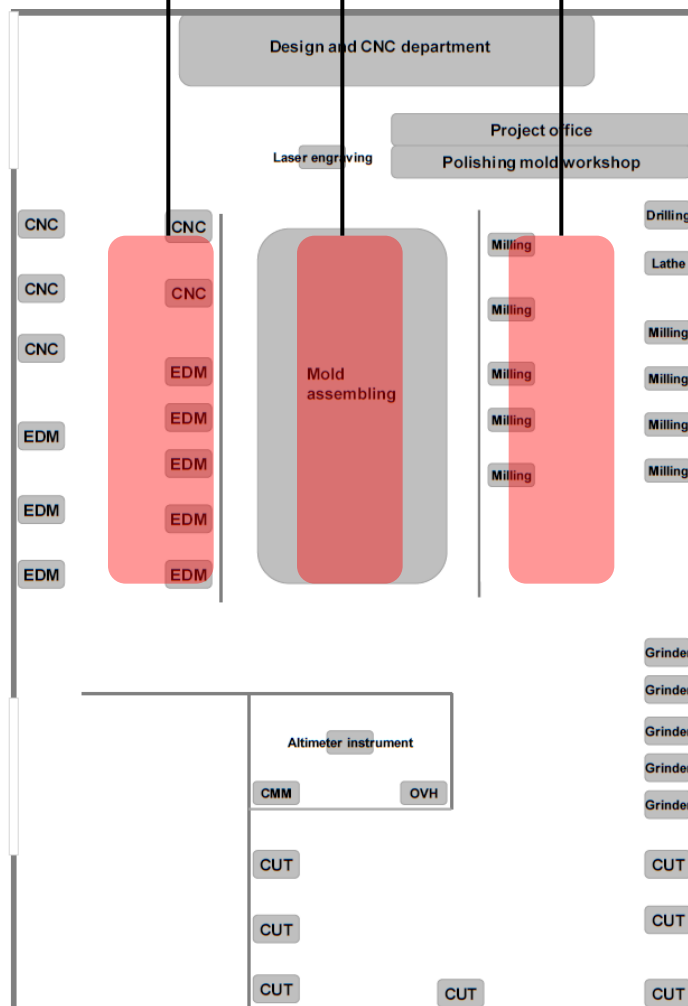


List of the machines

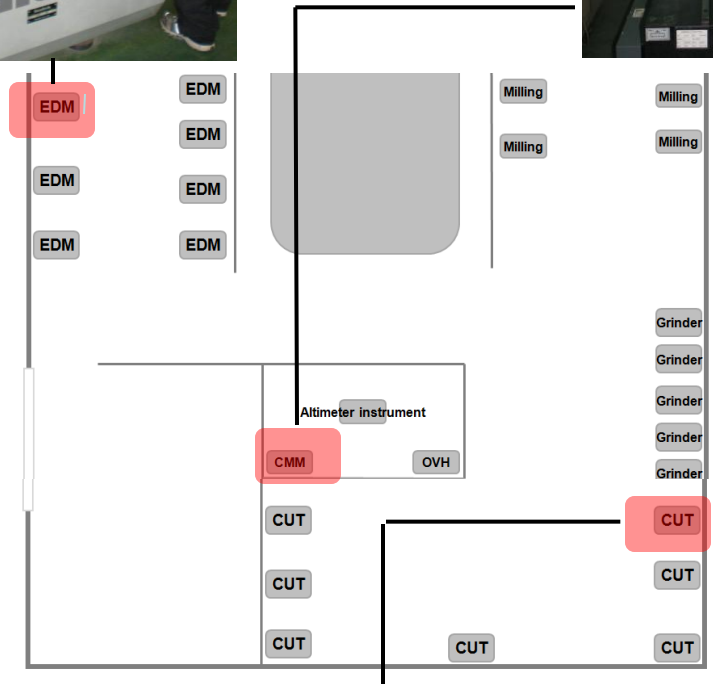
machine type	quantity	country of origins	precision	working stroke
CNC	2	made in Japan	0.002mm	600mm X 400mm X 400mm
	1	made in Japan	0.002mm	600mm X 400mm X 400mm
	2	made in Taiwan	0.005mm	800mm X 600mm X 500mm
	1	made in Korea	0.005mm	1200mm X 1000mm X 700mm
6				
EDM	2	made in Japan	0.002mm	600mm X 400mm X 400mm
	3	made in Taiwan	0.005mm	800mm X 600mm X 500mm
	1	made in Taiwan	0.005mm	1200mm X 1100mm X 900mm
	2	made in Taiwan	0.005mm	900mm X 700mm X 500mm
8				
CUT	2	made in Japan	0.002mm	550mm X 400mm X 250mm
	4	made in China	0.02mm	600mm X 400mm X 250mm
	2	made in China	0.02mm	800mm X 600mm X 250mm
8				
Grinder	1	made in China	0.005mm	1100mm X 600mm X 550mm
	4	made in Taiwan	0.002mm	550mm X 200mm X 350mm
5				
Milling machine	6	made in China	0.05mm	900mm X 250mm X 300mm
	3	made in China	0.05mm	1200mm X 300mm X 350mm
9				
Drilling	1	made in China	0.1mm	1200mm X1000mm X 1200mm
1				
Lathe	1	made in China	0.005mm	1200mm X300mm
1				
Laser engraving	1	made in China	0.005mm	1200mm X300mm
1				
CMM	1	made in Japan	0.002mm	1200mm X 900mm X 700mm
Altimeter instrument	1	made in Japan	0.002mm	1000mm
OVH	1	made in Taiwan	0.002mm	300mm X 200mm X 180mm
3				
injection molding machine	1	made in China	120 ton	410mm X 410mm X 450mm
	1	made in China	200 ton	530mm X530mm X 550mm
	1	made in China	250 ton	580mm X 580mm X 580mm



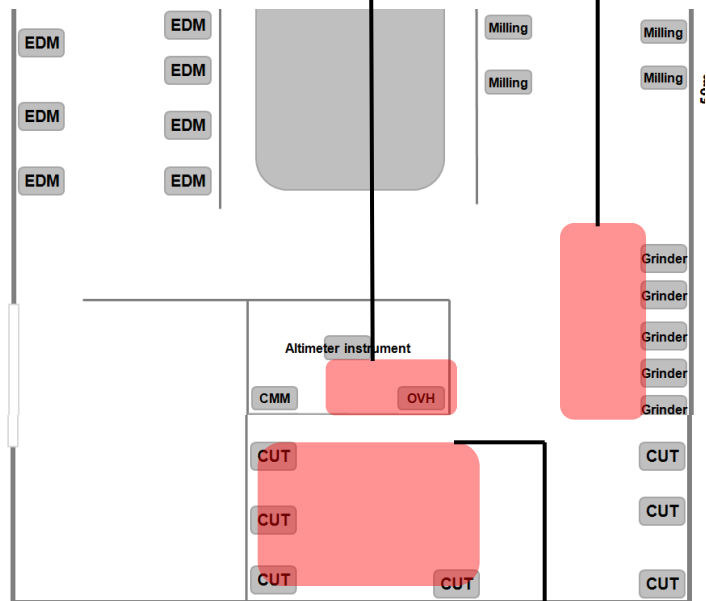
Viewmold's workshop







Viewmold's workshop



Viewmold's supplier

